



ACTUAL SIZE

PowerTrac Monitor

BATTERY DATA LOGGER

Critical information at your fingertips

- + Minimal infrastructure costs
- + Non-invasive installation
- + Quick access to battery reports
- + Efficiently manage battery utilization

Sustainability

- + Extend battery life
- + Eliminate extra batteries
- + Reduce energy costs
- + Increase energy efficiencies



The PowerTrac Monitor is a high performance, compact electronic battery monitoring device that attaches to your battery providing battery operation details. The PowerTrac Monitor continuously acquires battery parameters, processes information and stores relevant data when an event change occurs. The PowerTrac Monitor tracks and logs battery voltage, battery temperature, and battery current. The PowerTrac Monitor can be easily retrofitted into your existing battery systems.

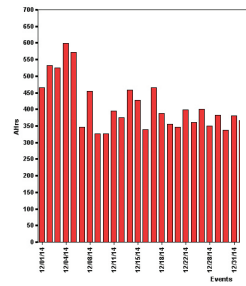
The PowerTrac Monitor tracks and records key battery parameters during charge, discharge and idle operation of the battery. The PowerTrac Monitor uses up to 90% less energy than previous models. It can store up to 10,000 events and has wireless data transfer. The new PowerTrac Monitor is more compact, less invasive, and easier to install due to shuntless design.



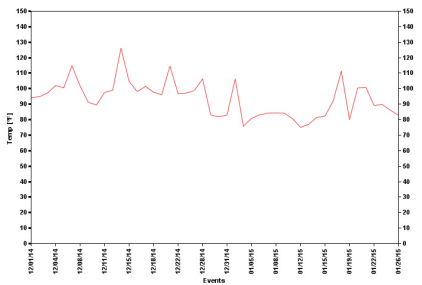
Features

- + Extends battery service life and reduces maintenance costs
- + Tracks battery performance over its life
- + Helps to oversee and schedule maintenance operations
- + Predicts battery replacements
- + Helps identify and solve battery/truck field problems
- + Wireless data transfer with superior microprocessor controls
- + Can be used with most battery types
- + Non volatile memory

Amp-hour



Temperature

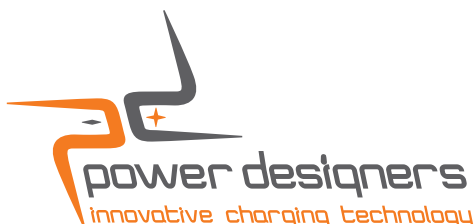


USB Communication device*
for PowerTrac Monitor

PowerTrac Monitor Specifications

Models	PTM
Current Monitoring	Shuntless Intercell Sensing
Temperature Monitoring	External Thermistor
Nominal Battery Voltage	24V-84V
Operating Voltage	18V- 120V
Bi-Directional Current Measurement	+/- 500A typical 1A resolution
Voltage Accuracy	0.1V
Data Storage	10,000 events
Real Time Clock	Time keeping and stamping of data
Operating Temperature	-20°C to + 50°C (-5°F to +100°F)
Dimensions	3.5"L x 1.5"W x .4"H
Interface	900Mhz Industrial Wireless
Data Collection	Upload data to PC via PowerTrac Link*
Wireless Range	Up to 150'
Packaging	Water and acid resistant
Power Consumption	1/4 Watt maximum
Protection	Internal fuse and external in-line fuse Reverse Polarity Protection

*PowerTrac Link sold separately



Power Designers USA LLC
4005 Felland Drive, Suite 116 • Madison, WI 53718 USA
+ 1.608.231.0450 • sales@powerdesigners.com • www.powerdesigners.com

Power Designers USA LLC reserves the right to incorporate design and material changes without notice.
Design features, materials of construction and dimensional data are provided for your information only and should not be relied upon unless confirmed from Power Designers USA LLC.